

Tips for preparing posters for printing at VD&P POSTERS when using Adobe Illustrator

COLOR SPACE

Working color space should be RGB – (Adobe RGB is best) – for all elements. Be sure all images and objects (in all layers) are in the same RGB color space.

FONTS AND OBJECTS

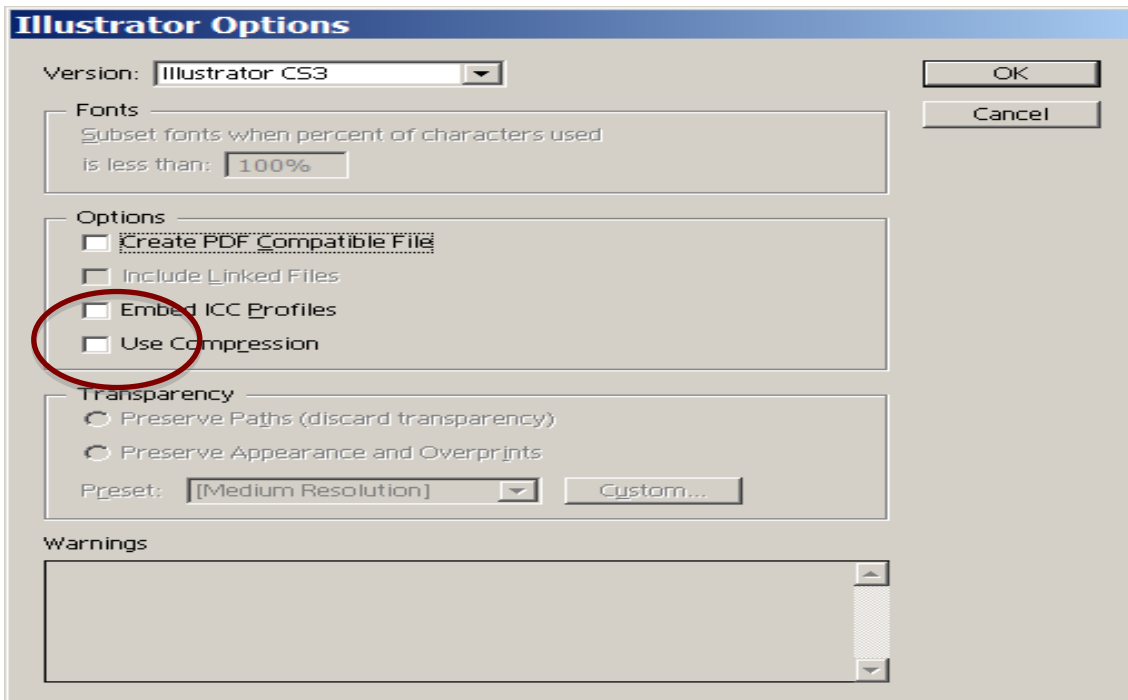
For best results change your fonts and objects into outlines. This eliminates scaling issues and guards against font substitutions. Make sure all objects and layers are unlocked or the changes will not affect any locked layers. Before changing to vector save a separate non-vector copy of your file. You will not be able to edit text once they are changed to vector/outlines.

PRINTING

File types to submit for printing: .PDF, .EPS or .AI (native file)

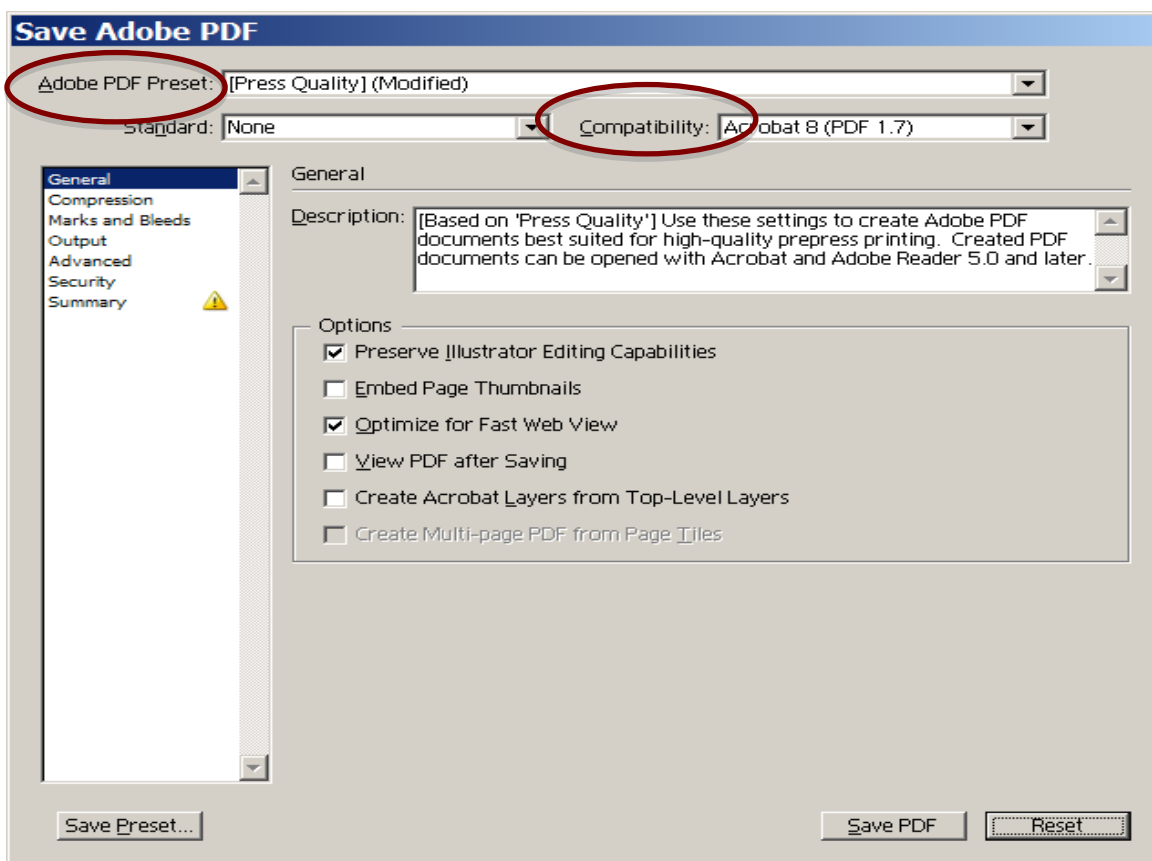
SAVING TO .AI FILE:

Remove compression- keep the rest as default.



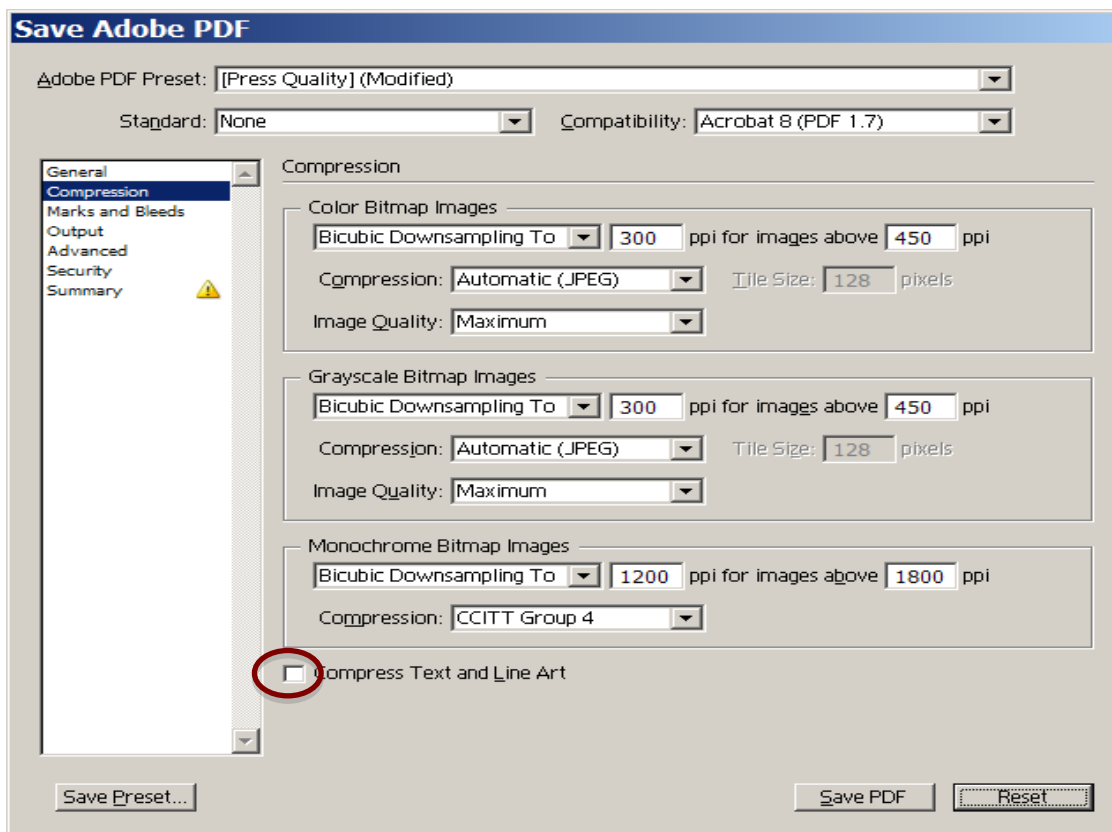
TO SAVE AS A PDF:

Under the file heading, choose Save As, then choose PDF on the drop down menu at the bottom of the dialog box that comes up. Under general: In Adobe PDF preset box use PRESS QUALITY Compatibility is set to Acrobat 5. Changing to newer version will put the word “MODIFIED” after pres quality.



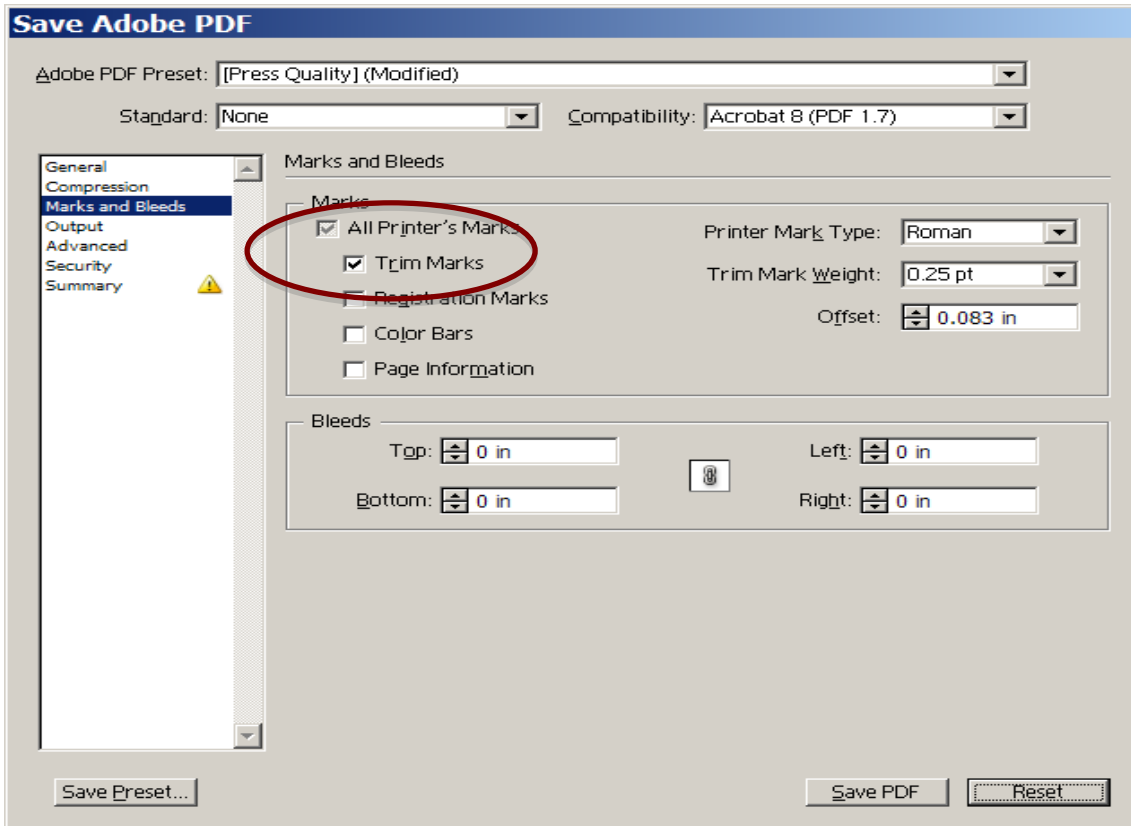
Under Compression:

If you make your poster at full size leave the “default” settings except uncheck the box for COMPRESS TEXT AND LINE ART. If you make your poster at a smaller percentage, to be enlarged, remove all Down Sampling and compression.



Marks and Bleeds:

If your document has no bleed, and has an all white background, check the box for “Trim Marks”. A colored background with no bleed does not require trim marks.



Output:

COLOR CONVERSION- change to “no conversion”. For “Profile Inclusion Policy” select “Include All Profiles”.

Export Adobe PDF

Adobe PDF Preset: [Press Quality] (modified) ▼

Standard: None ▼ Compatibility: Acrobat 8 (PDF 1.7) ▼

Output

Color

Color Conversion: No Color Conversion ▼

Destination: N/A ▼

Profile Inclusion Policy: Include All Profiles ▼

Simulate Overprint [Ink Manager...](#)

PDF/X

Output Intent Profile Name: N/A ▼

Output Condition Name: N/A

Output Condition Identifier: N/A

Registry Name: N/A

Description

Position the pointer over a heading to view a description.

[Save Preset...](#) [Export](#) [Reset](#)

SAVING AS AN .EPS FILE

Under the file menu go to Save As and select .EPS on the drop down menu of the dialog box that comes up. Put Adobe Postscript Language Level to 3 or 4 and be sure EMBED FONTS is checked. Keep the rest of the defaults as is.

If you have a white background you need to draw a bounding box (1pt keyline) around the edge of your poster. Be sure to remove any fill color that may appear.

